

# Codend selectivity in the East China Sea of a trawl net with the legal minimum mesh size

著者	東海 正, 塩出 大輔, 酒井 猛, 依田 真里
journal or publication title	Fisheries Science
volume	85
number	1
page range	19-32
year	2019-01
権利	(c) 2018 Japanese Society of Fisheries Science and Springer Japan. This is the author's version of the work. It is posted here for your personal use. To cite/redistribute/reproduce this work, the Publisher's version in <a href="https://doi.org/10.1007/s12562-018-1270-x">https://doi.org/10.1007/s12562-018-1270-x</a> should be used, and obtain permission from Publishers, if required.
科学研究費研究課題	底曳網の選択性パラメータにおける変動要因と資源管理におけるリスク評価 Factors affecting variation in selectivity parameters of trawl codend and risk evaluation for fisheries resource management
研究課題番号	16K07837
URL	<a href="http://id.nii.ac.jp/1342/00001811/">http://id.nii.ac.jp/1342/00001811/</a>

doi: 10.1007/s12562-018-1270-x

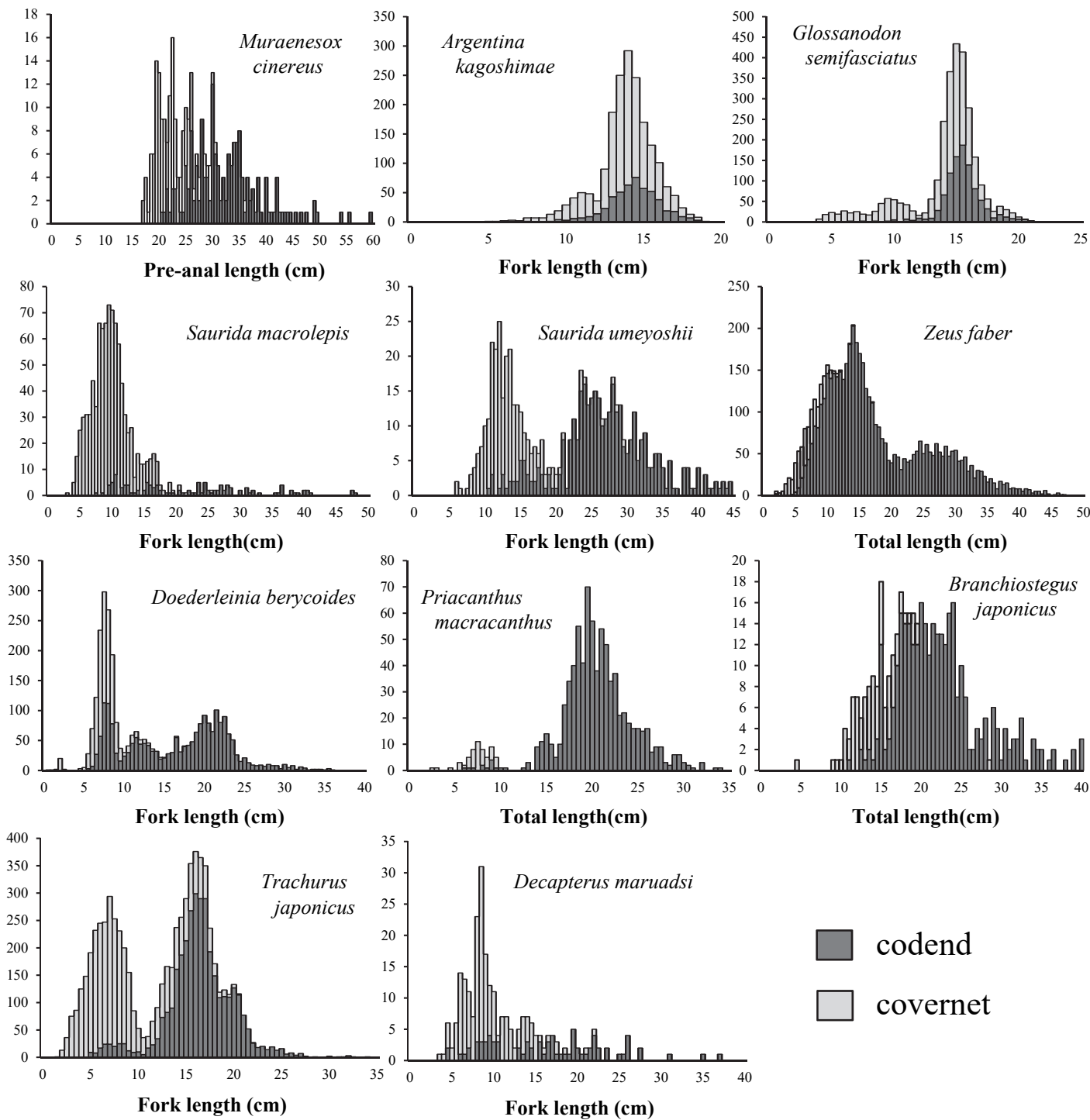


Fig. 1. Length distribution of fishes and squids caught in codend and covernet by species.

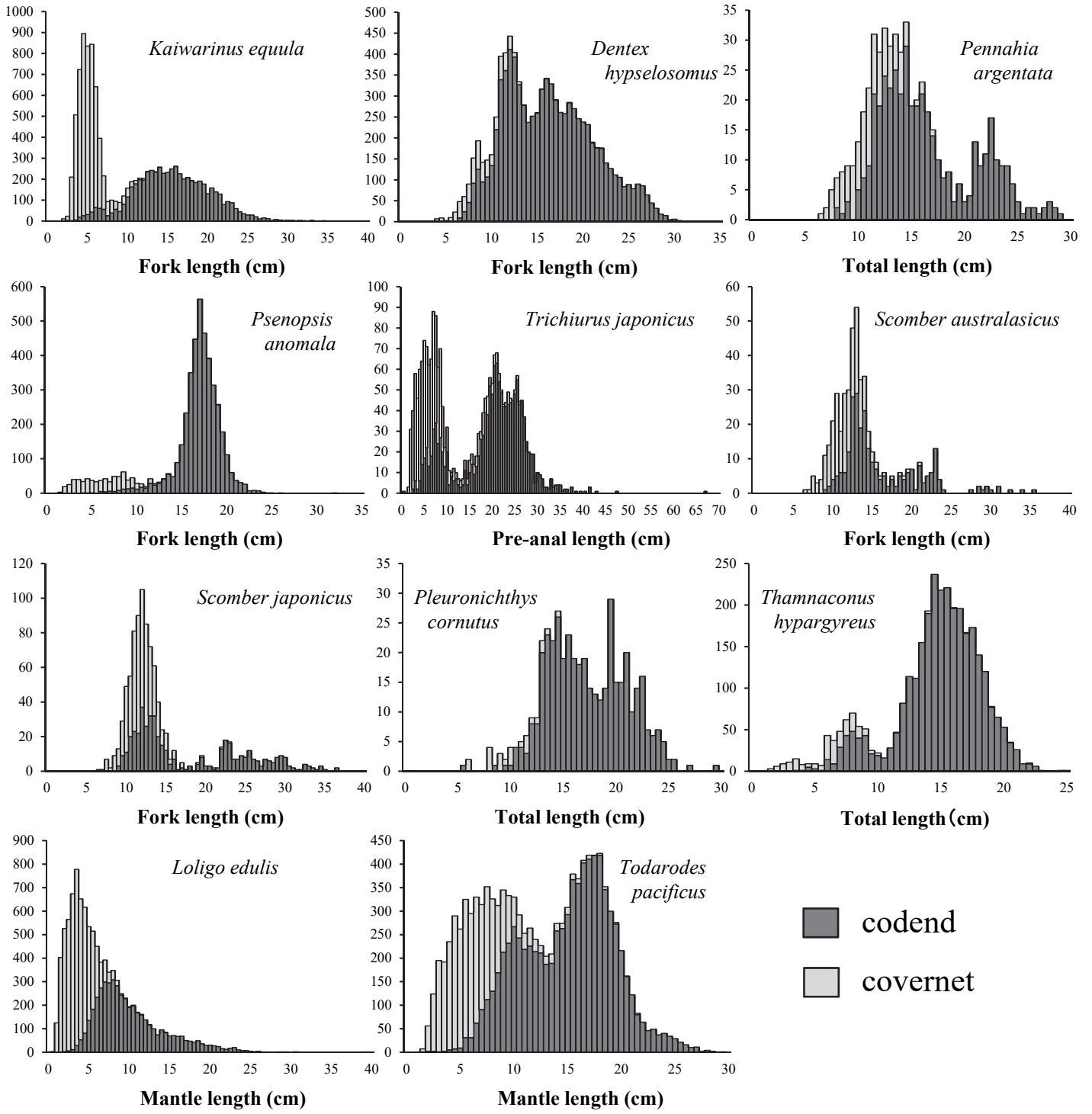


Fig. 1. (continued)

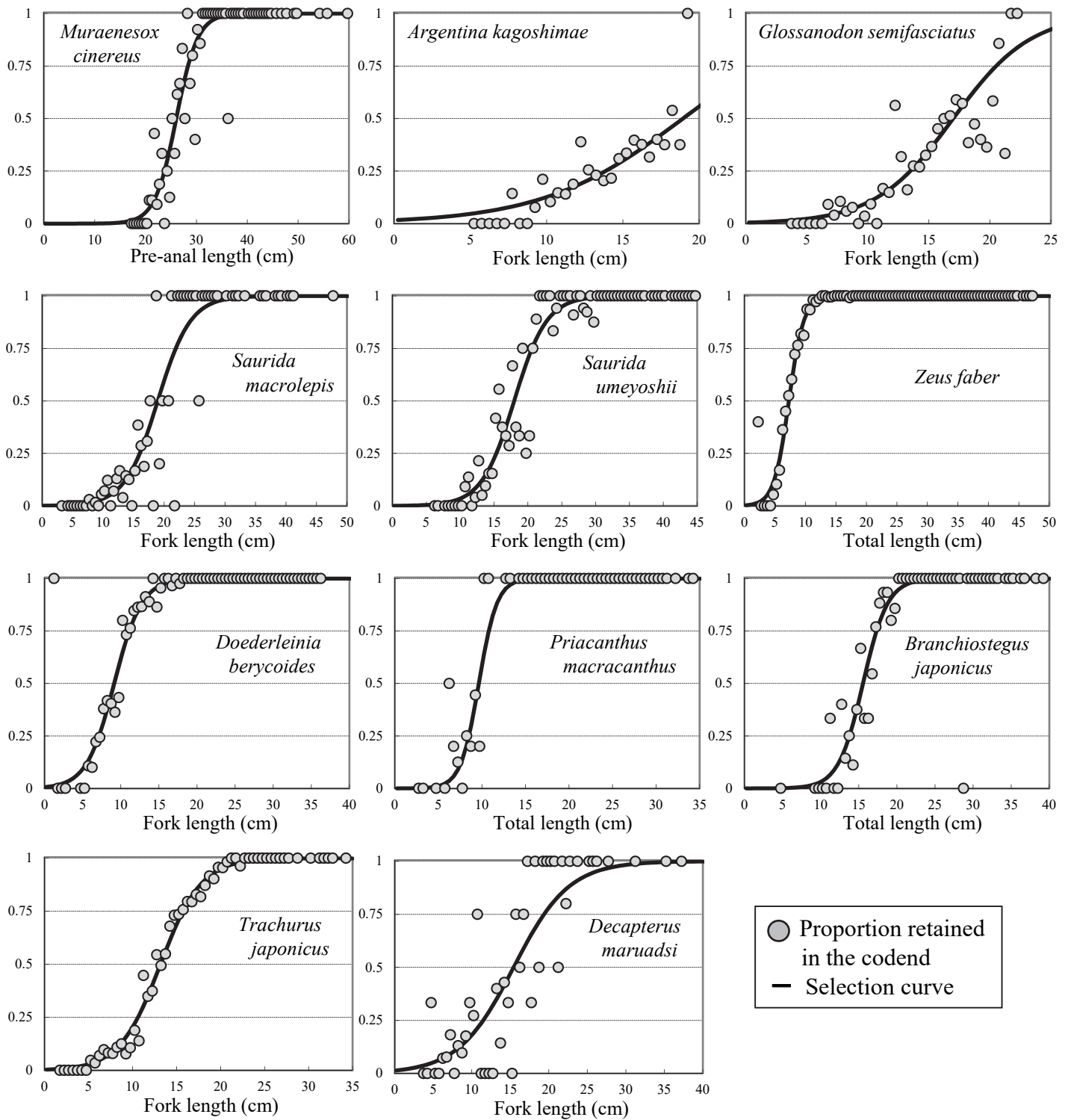


Fig. 2. Proportion retained in the codend and the estimated selection curve by species.

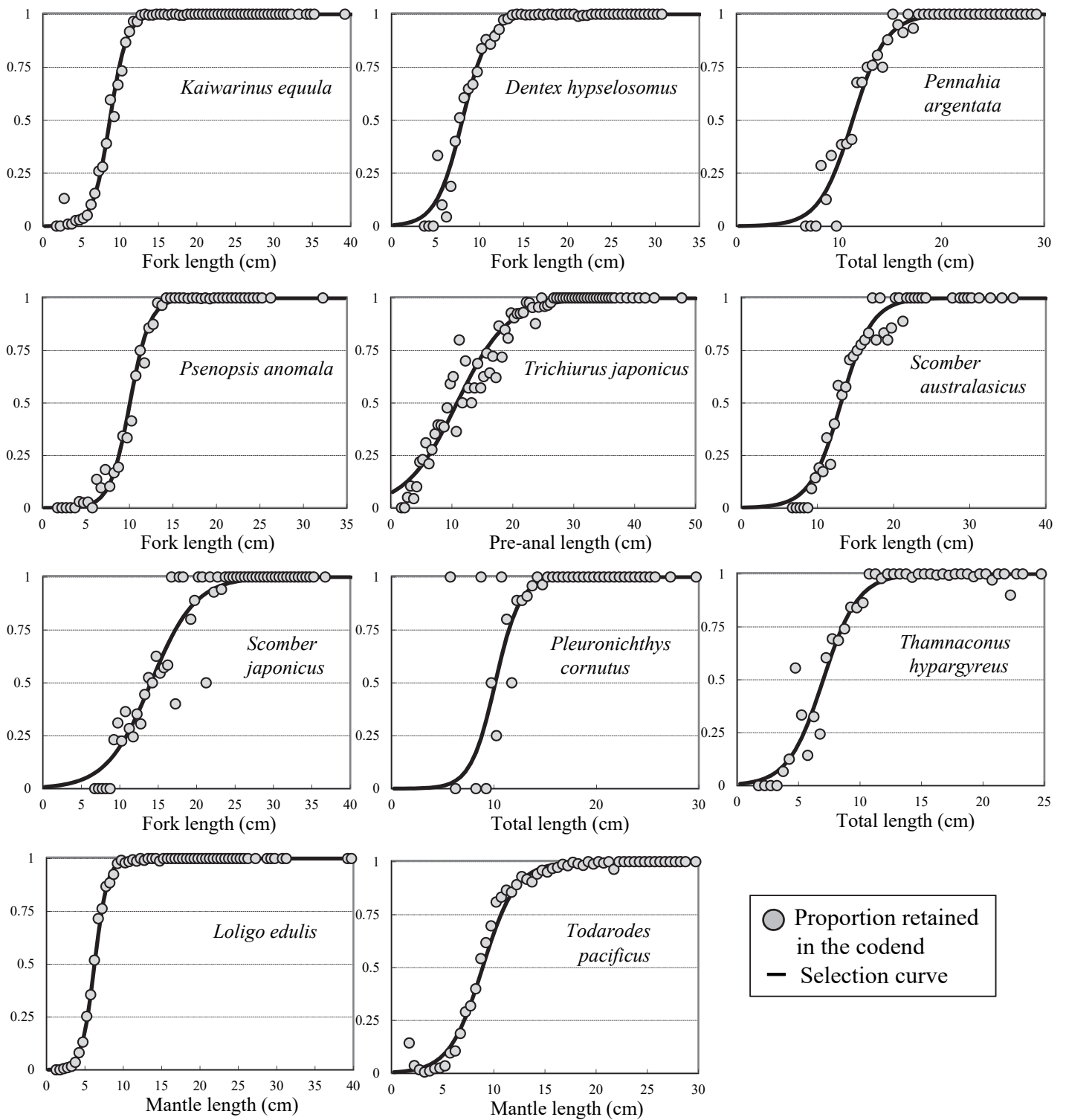


Fig. 2. (continued)

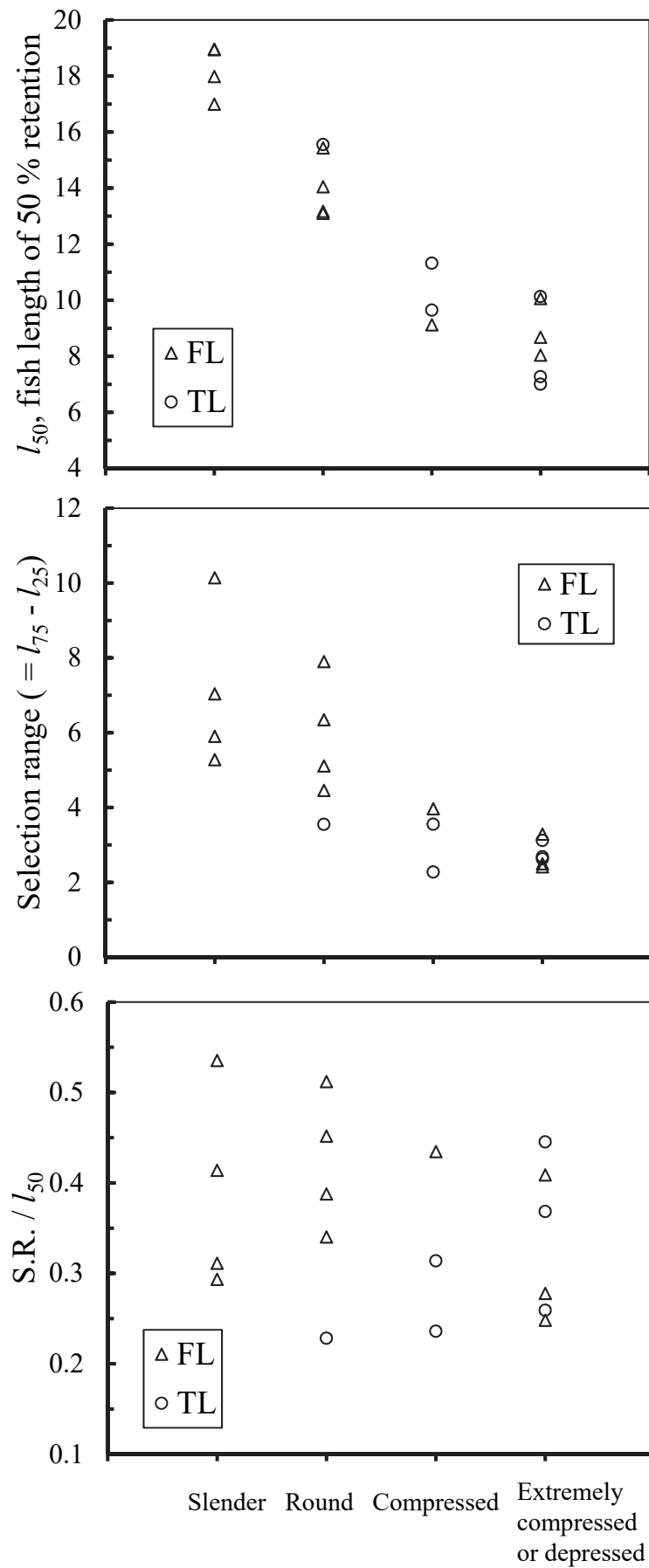


Fig. 3. Length of 50% retention, selection range, and ratio of the selection range to 50% retention length in the codend selection curve in relation to fish body shape.

Species name and body dimension

Body size in cm

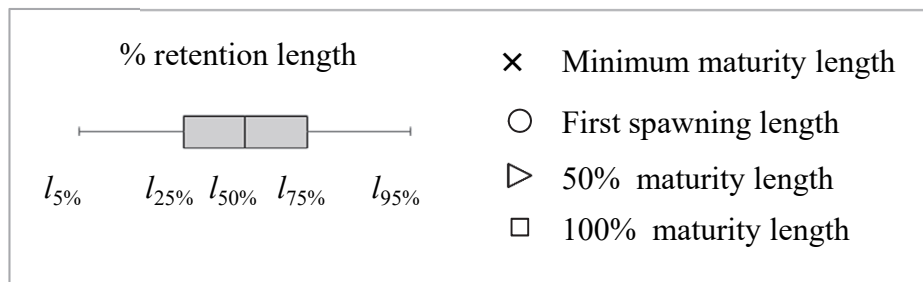
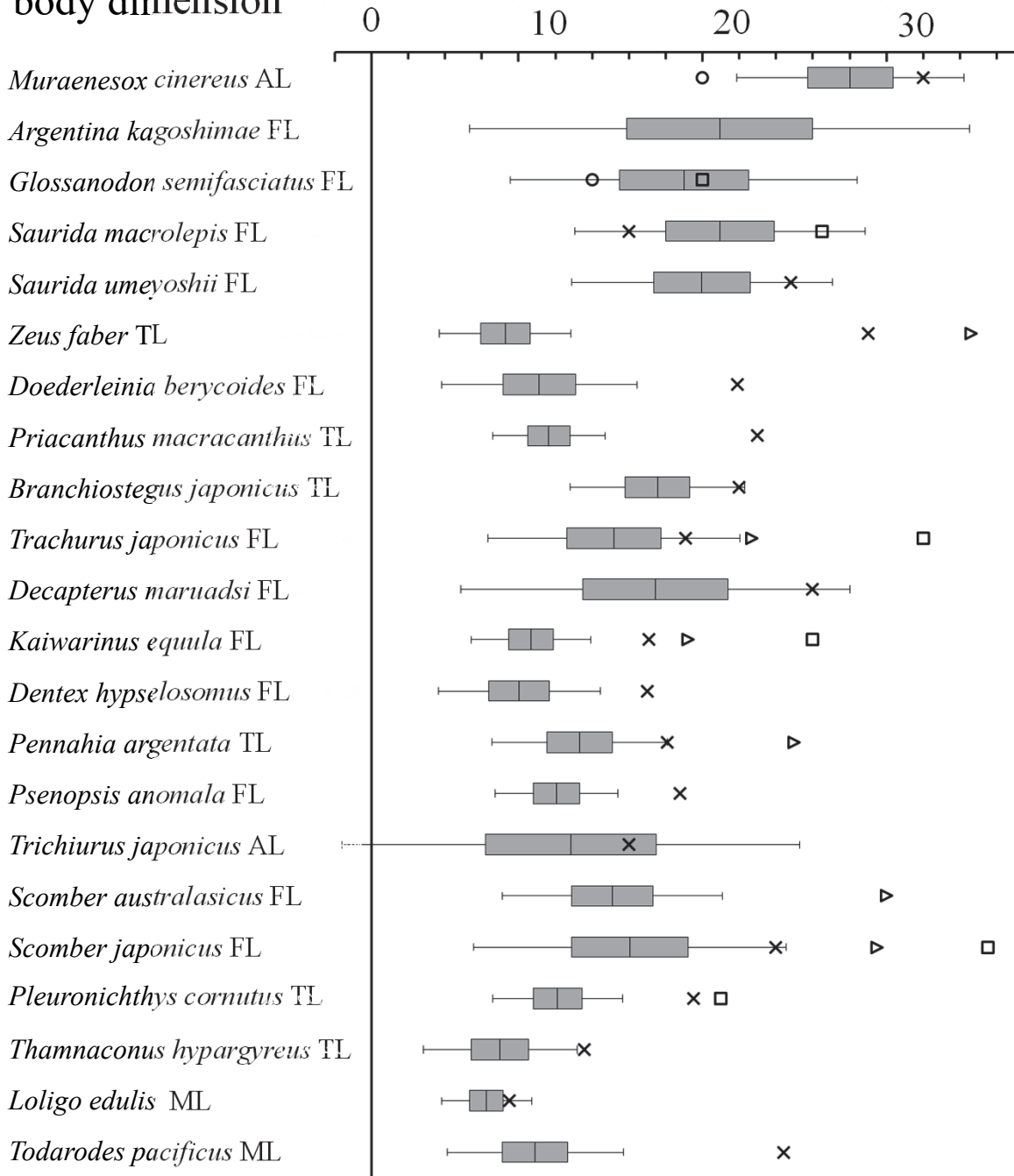


Fig. 4. Comparison between maturity size parameters of female and codend selection lengths by species.